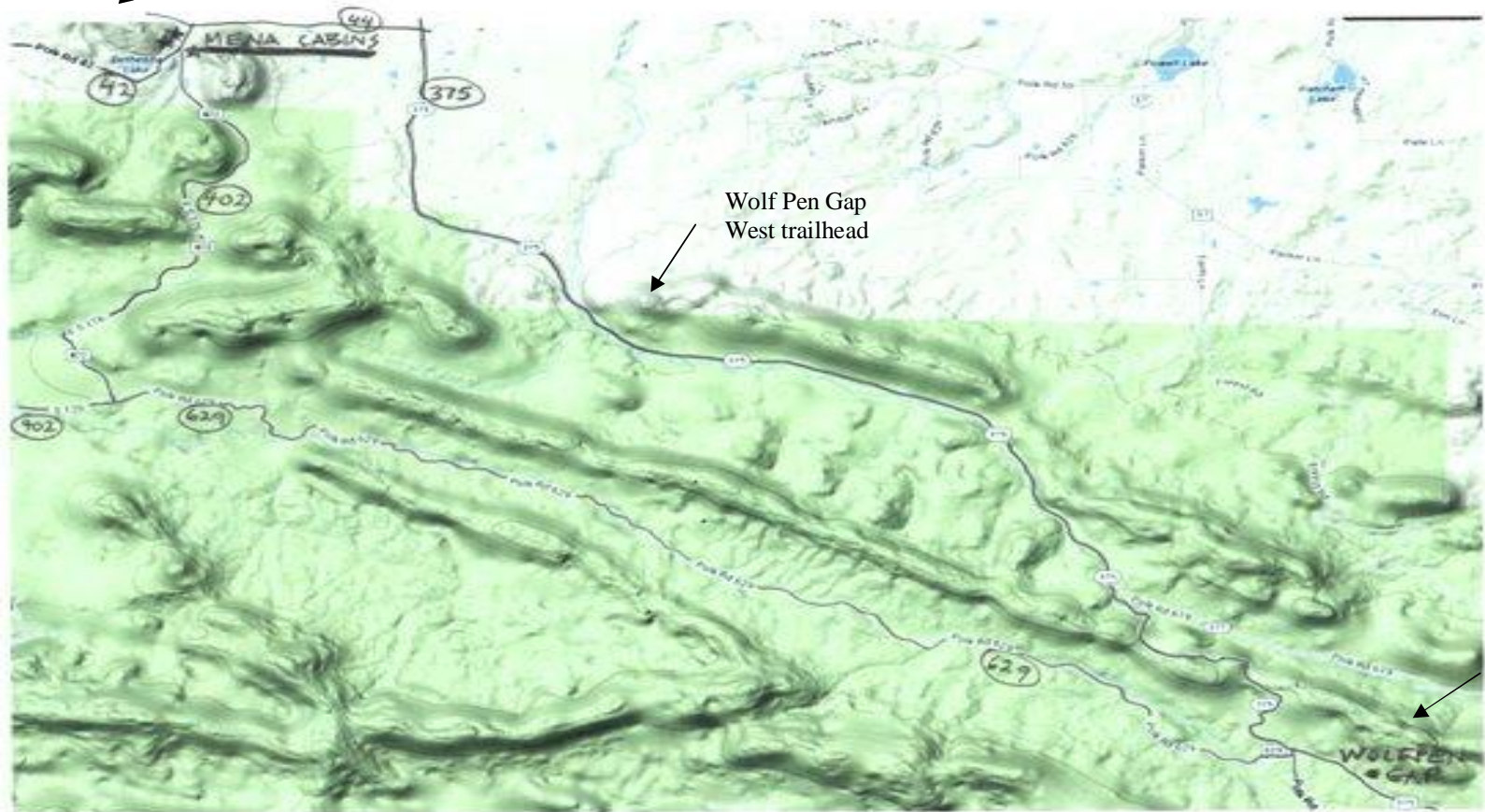


Mena Cabins



Wolf Pen Gap South trailhead

### Two ways to ride to Wolf Pen Gap trails

From Mena Cabins to the 375 Wolf Pen Gap South Trailhead, you can go on paved road or gravel:

Paved: easier, but busier traffic: Go east on our road 42 to Bethesda (44), turn right, right again on 375. Approximately 8 miles to the trailhead. Most people trailer ATVs and take them to the trails.

Gravel: really pretty, no traffic. Go west just a few feet from the cabins, go left on 402 for approximately 2 or 3 miles, go left again on 629 for about 6 miles or so, then a short jog as 629 and other gravel roads join 375. Right on 375, paved road. This road can get washed out sometimes, so you might want to call the Forest Service to check on it before going that way: (479) 394-2382